

large connector plugged into the vehicle wiring harness to minimize the number of new diagnostic trouble codes created.

The following cable can be used to access information from the powertrain control module (PCM);

CDR Cable Number F00K108222

This section provides general information about the EDR capability of the PCM(s) this cable connects to and the type of EDR data that may be recorded. Always refer to the Data Limitations section of the CDR report for further information about the PCM and limitations of the data retrieved. The information included in the CDR report's Data Limitations section for this PCM is considered to be more precise and current than the generalized information included below. The actual data retrieved from the PCM may differ from what is described below. Review all vehicle coverage notes which are referenced in the Supported Vehicle list for this PCM before attempting to retrieve data from it.

These Powertrain Control Modules (PCM) are capable of capturing up to 25 seconds (** see note below) of data from 16 PCM inputs/outputs every 0.2 seconds. When the PCM receives a Restraint Deployment Signal (RDS) from the Restraint Control Module (RCM) indicating a seat belt or airbag deployment event occurred, the PCM will lock 20 seconds of "pre-crash" and record 5 seconds of "post crash" data in the PCM's memory. If an RDS is not received, the PCM will record these 16 inputs/outputs until the vehicle's ignition is switched off or power is removed from the PCM.

Important: You must use the cables and adapters which are specifically called out for imaging PCM data from Ford vehicles and follow the instructions provided in this help file to ensure that the data is collected without accidental data spoliation. [Click here for instructions on how to use your CDR PCM cables and adapter when collecting data from Ford PCMs.](#)

CDR reports include the following information received from the PCM:

Buffer Address	The hex address of the PCM's circular buffer.
Relative Time (calc.)	Calculated Relative Time in seconds calculated by the CDR system. This calculation is based on the PCM writing values for each parameter into memory every 0.2 seconds (200 ms). Is only displayed if an RDS was received.
Restraint Deployment Signal	Signal status from the Restraint Control Module (RCM) which indicates the RCM commanded the airbags/restraint devices to be deployed.

Speed, Vehicle Indicated	Vehicle speed in MPH which is proportional to wheel speed. If wheels are locked this value will indicate 0 mph.
Accelerator Pedal % Full	Accelerator pedal rotation in percent.
Engine Throttle % Full	Throttle valve (on engine) percent open.
Brake Switch	Brake light switch status. On means the switch turns on the brake lights and Off means the switch turns brake lights off.
Brake SC De-ac	Brake pedal speed control deactivation switch. On means the switch provides deactivation of Speed Control and Off means the pedal position is not deactivating the Speed Control.
ABS	Antilock Brake system status. Active means the ABS system is enabled and Inactive means the system is off or disabled.
Transmission & Neutral	Neutral transmission gear status. A Neutral value means the transmission indicator was in the Neutral position and a 'Not Neutral' value means the indicator switch was in any position other than Neutral.
Transmission & Reverse	Transmission in reverse gear indicator. A 'Reverse' value means the transmission indicator was in the Reverse gear position and a 'Not Reverse' value means the indicator switch was in any position other than Reverse.
Speed Control	Indicates if Speed control was on or off.
Engine RPM	Engine Revolutions Per Minute.
Wheel Torque Commanded (calculated)	Commanded torque at wheels (calculated)
Wheel Torque Actual (calculated)	Actual torque at wheels (calculated)
Traction Control	Indicates of the traction control system is active, meaning enabled or not active meaning the system is off or disabled.

Stability Control Integrated Vehicle Dynamics Active means the system is on or enabled and Inactive means the system is off or disabled.

Key on Timer ‐ Key on Timer parameter counts up from 0 on key on and 63.75 Max (sec) stops at 63.75 seconds until the ignition switch is cycled off and then on again.

Vehicle Identification Number This number is retrieved from the PCM

PCM File Name (calibration level) This file name is recorded in the PCM

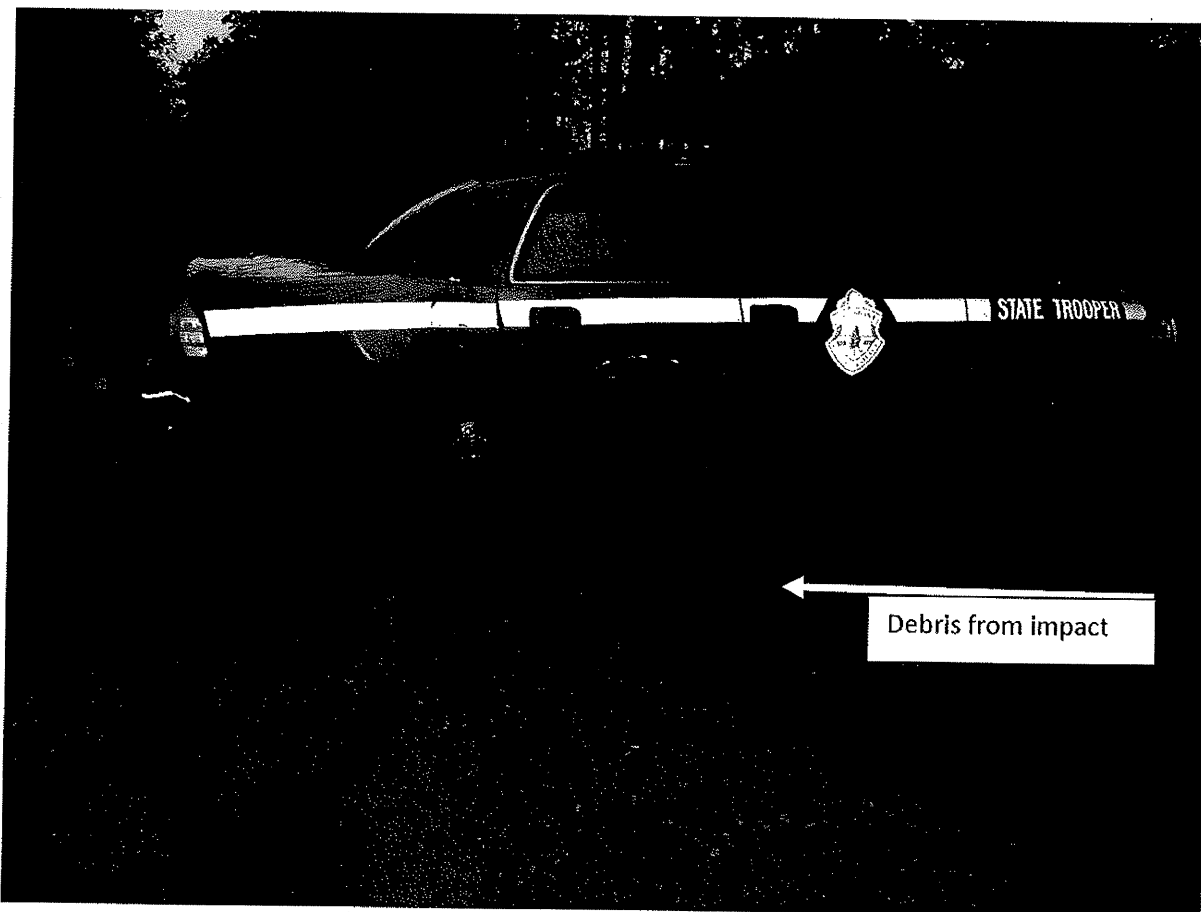
PCM Part Number Retrieved from the PCM

** Some 2005 ‐ 2006 Ford 500 vehicles may only store 12.5 seconds of crash data.

I was not asked to extract electronic data which may have been stored within the vehicles airbag control module and/or the powertrain control module.

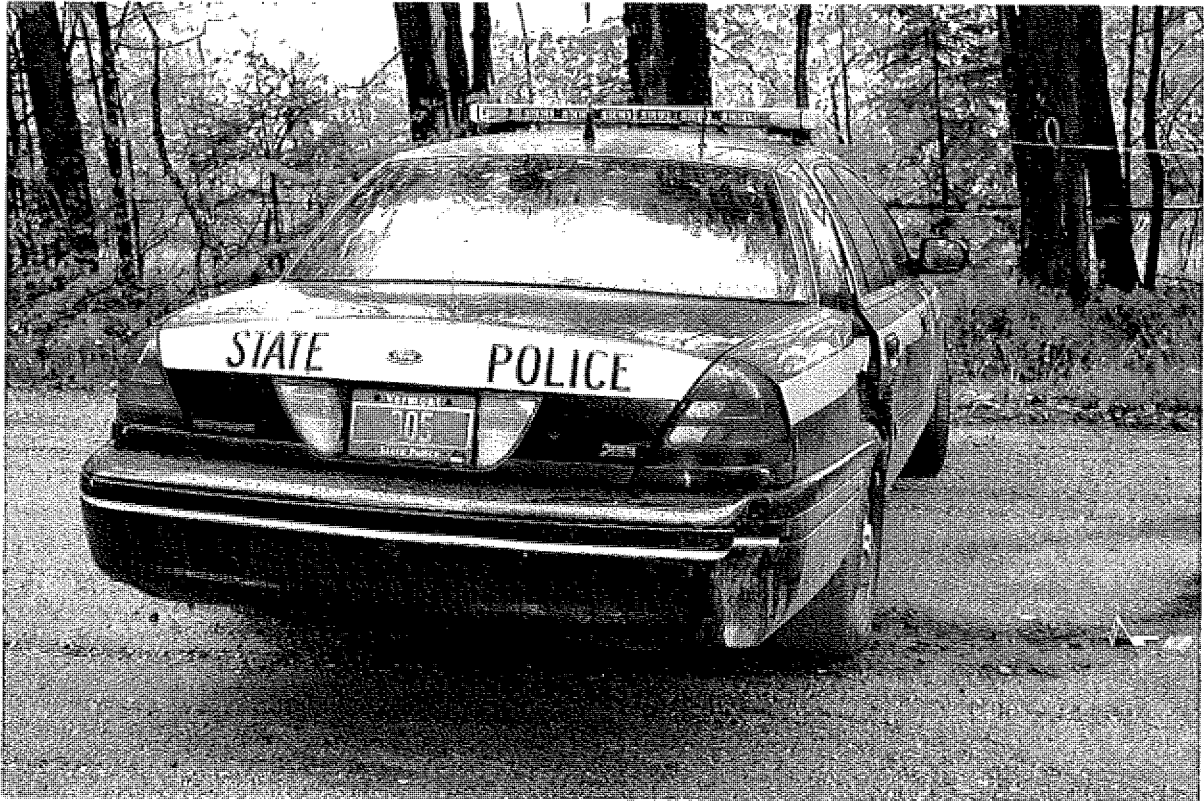
VEHICLE#3

Vehicle 3 is a Vermont State Police cruiser, fleet number 3527FS11, a 2011 FORD CROWN VICTORIA, Vermont State Police registration 305, vehicle identification number 2FABP7BV1BX133527.



DAMAGE

EQ305 received damage to the rear passenger door, rear passenger side quarter panel, and rear bumper area as a result of being struck by Vehicle 1.



SPECS

Specs are similar to EQ367. See Specs above.

Recalls

I contacted David Tiff, the manager of the Vermont State Police Fleet Services who advised there were no active recalls on this vehicle.

CDR

CDR data is identical to Vehicle 2 listed above. I was not requested to extract the electronic data which may have been stored in the vehicle's airbag control and/or powertrain control module.

SCENE MAPPING

To document the physical evidence at this crash scene, a Sokkia 530R total station was employed. A reference measurement protocol as suggested by the Professional Society for Forensic Mapping was followed, whereby two independent measurements were taken to a known distance of 20 feet using a steel tape measure. One was taken at the start of electronic mapping and another at its conclusion. This was done to verify 'acceptable accuracy' levels for both distances and angles. Additionally 'raw' data for each measurement log produced as a result of this forensic mapping was preserved in a .raw

file which is attached with the case. Trooper Charles Schulz used the raw data to create a diagram of the scene.

There were no suitable reference points in the area surrounding this incident. After using the total station, I located a survey marker to the left (west) side of the road. Using a tape measure, I measured 17 feet to the east of the survey marker. The total station was located 133 feet 4 inches to the south of the aforementioned mark.

CALCULATIONS

No calculations were requested.

SUMMARY

The definition of a motor vehicle crash is an unintended event causing death, injury or property damage greater than \$3000 involving a motor vehicle in transport. This event does not meet that definition. Operator 1 (Jackson) intentionally drove into Sgt. Dennis Girouard's cruiser (EQ305) and then intentionally backed into the front of Trooper Seth Loomis's cruiser (EQ367).

This report was provided to Detective Sgt. Barb Zonay. Here end my involvement in this incident.

Submitted by:

Owen Ballinger

Owen Ballinger

06-10-2014

Date

Approved by:

Garry Scott

Lt. Garry Scott

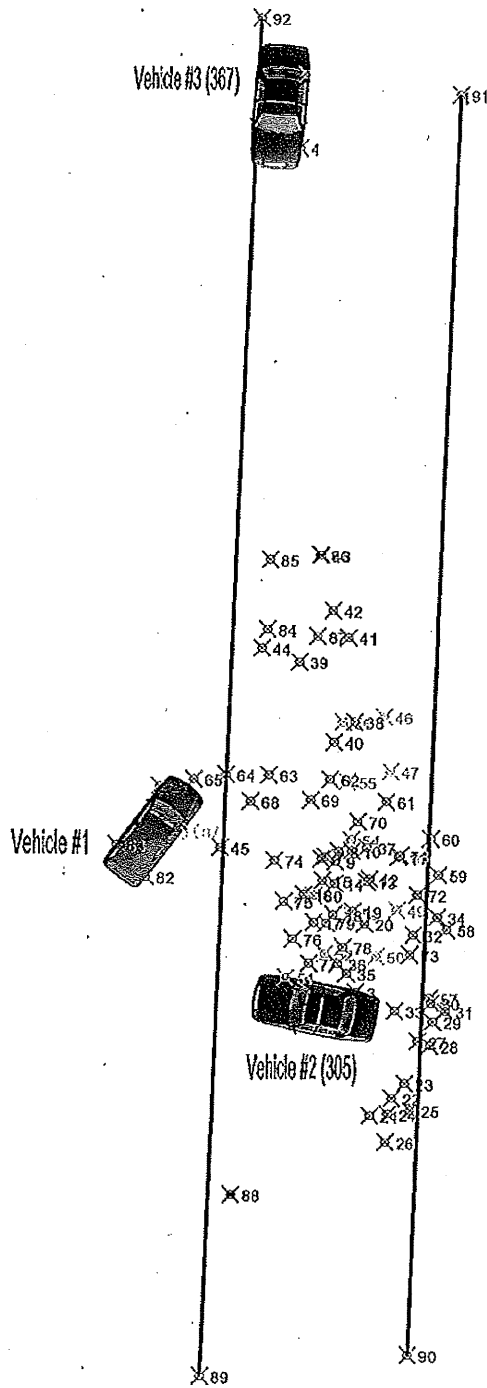
6-26-14

Date

VERMONT STATE POLICE

CRASH RECONSTRUCTION TEAM

Case Number;	14B101662
Incident Date	05/28/14
Location	Burton Hill Road, Barton
Drawn By:	Trooper Charles Schulze



VERMONT STATE POLICE

CRASH RECONSTRUCTION TEAM

Case Number:	14B101662
Incident Date	05/28/14
Location	Burton Hill Road, Barton
Drawn By:	Trooper Charles Schulze

Vehicle #3 (367)



Vehicle #1



Vehicle #2 (305)



VERMONT STATE POLICE

CRASH RECONSTRUCTION TEAM

Case Number;	14B101662
Incident Date	05/28/14
Location	Burton Hill Road, Barton
Drawn By:	Trooper Charles Schulze

Vehicle #3 (367)



Vehicle #1



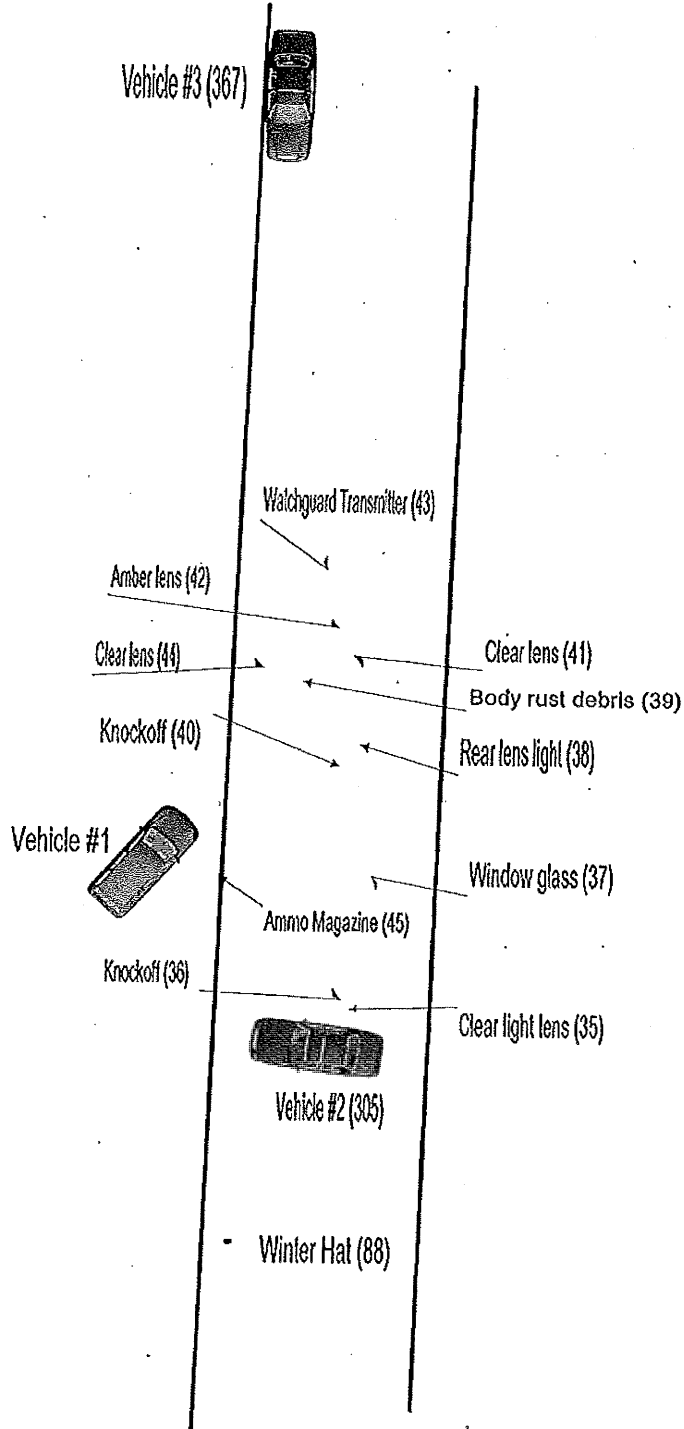
Vehicle #2 (305)

Scene showing shell casings

VERMONT STATE POLICE

CRASH RECONSTRUCTION TEAM

Case Number;	14B101662
Incident Date	05/28/14
Location	Burton Hill Road, Barton
Drawn By:	Trooper Charles Schulze



Measurement Log Report

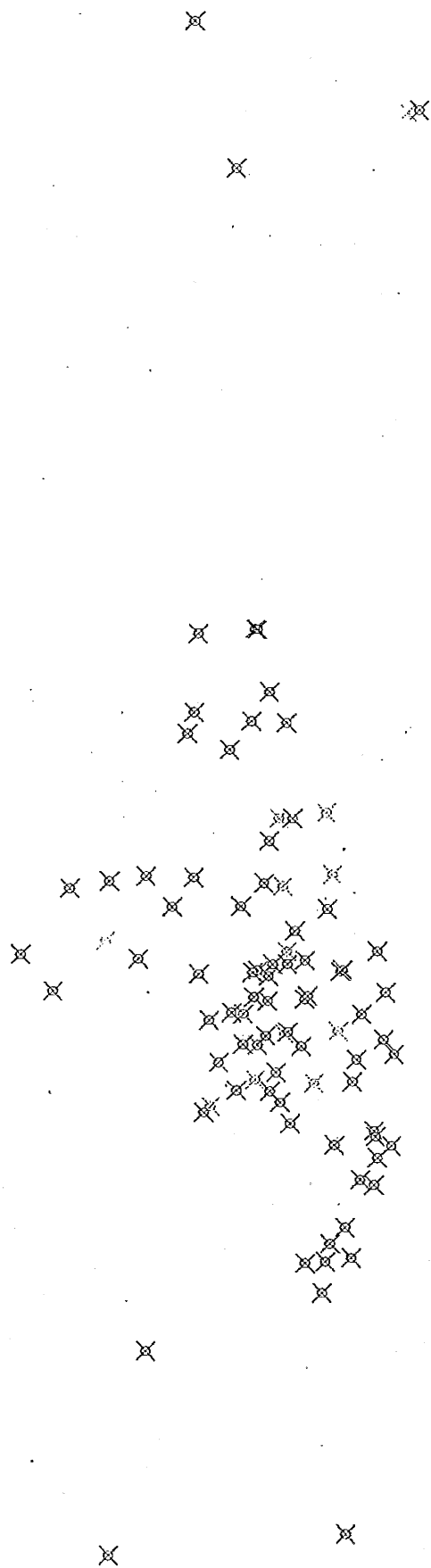
Organization	Vermont State Police	Measured By	Corporal Owen Ballinger
File Number	14B101662	Assisted By	Trooper Charles Schulze
Incident Date	05/28/14	Date Measured	05/28/14
Location	Burton Hill Road, Barton	Weather	
Reference 1		Road	
Reference 2		Visibility	

Index	North (Y)	East (X)	Elevation (Z)	Description	Editted
1	-19.810	0.000	2.741	--RM	
2	-131.941	-19.770	19.226	--V2RF	
3	-133.003	-10.284	19.270	--V2RR	
4	-26.366	-18.823	4.586	--V3LF	
5	-17.100	-18.047	3.388	--V3LR	
6	-116.166	-14.786	15.902	--EVID	
7	-115.930	-14.258	15.881	--EVID	
8	-115.213	-12.604	15.760	--EVID	
9	-116.536	-13.010	15.938	--EVID	
10	-115.153	-10.990	15.691	--EVID	
11	-115.879	-5.126	15.641	--EVID	
12	-118.692	-8.717	16.004	--EVID	
13	-119.057	-9.016	16.058	--EVID	
14	-119.316	-13.057	16.299	--EVID	
15	-118.924	-14.603	16.301	--EVID	
16	-120.697	-16.971	16.433	--EVID	
17	-124.239	-15.658	16.829	--EVID	
18	-123.234	-13.196	16.697	--EVID	
19	-122.778	-10.771	16.545	--EVID	
20	-124.341	-9.267	16.656	--EVID	
21	-148.600	-8.291	19.435	--EVID	
22	-146.378	-5.579	19.086	--EVID	
23	-144.515	-3.990	18.826	--EVID	
24	-148.385	-6.046	19.352	--EVID	
25	-147.905	-3.235	19.192	--EVID	
26	-151.892	-6.323	19.775	--EVID	
27	-139.150	-2.431	18.136	--EVID	
28	-139.700	-0.886	17.505	--EVID	
29	-136.681	-0.577	17.082	--EVID	
30	-134.295	-0.831	16.886	--EVID	
31	-135.312	0.961	16.735	--EVID	
32	-125.715	-3.140	16.615	--EVID	
33	-135.327	-5.350	17.832	--EVID	
34	-123.452	-0.184	15.375	--EVID	
35	-130.653	-11.435	17.525	--EVID	
36	-129.438	-12.583	17.420	--EVID	
37	-114.689	-9.091	15.632	--EVID	
38	-98.818	-10.814	13.824	--EVID	
39	-91.285	-17.881	12.323	--EVID	
40	-101.398	-13.319	14.163	--EVID	
41	-88.171	-11.718	11.951	--EVID	
42	-84.752	-13.688	11.650	--EVID	
43	-77.765	-15.219	10.870	--EVID	
44	-80.571	-22.583	12.119	--EVID	

Index	North (Y)	East (X)	Elevation (Z)	Description	Edited
45	-114.850	-27.476	15.521	--EVID	
46	-98.147	-7.124	13.270	--TIR1	
47	-105.065	-6.266	14.202	--TIR1	
48	-115.644	-4.775	15.583	--TIR1	
49	-122.594	-5.254	16.545	--TIR1	
50	-128.445	-7.798	17.425	--TIR1	
51	-131.216	-19.077	18.030	--TIR2	
52	-128.190	-14.253	17.601	--TIR2	
53	-122.995	-11.113	16.813	--TIR2	
54	-113.755	-11.064	15.555	--TIR2	
55	-106.420	-11.675	14.569	--TIR2	
56	-98.841	-12.278	13.529	--TIR2	
57	-133.682	-1.037	16.853	--TIR3	
58	-125.036	1.046	15.565	--TIR3	
59	-118.124	-0.090	15.735	--TIR3	
60	-113.541	-1.096	15.187	--TIR3	
61	-108.905	-6.729	14.753	--TIR3	
62	-106.138	-13.787	14.625	--TIR3	
63	-105.646	-21.515	14.506	--TIR3	
64	-105.591	-26.836	13.532	--TIR3	
65	-106.219	-30.909	13.282	--TIR3	
66	-107.100	-35.243	15.108	--V1LF	
67	-112.898	-31.214	14.255	--V1RF	
68	-108.971	-23.769	14.922	--TIR5	
69	-108.770	-16.225	14.952	--TIR5	
70	-111.437	-10.263	15.195	--TIR5	
71	-115.715	-4.932	15.607	--TIR5	
72	-120.645	-2.687	16.128	--TIR5	
73	-128.211	-3.544	17.196	--TIR5	
74	-116.460	-20.694	15.959	--TIR6	
75	-121.595	-19.439	16.698	--TIR6	
76	-126.330	-18.277	17.326	--TIR6	
77	-129.419	-16.243	17.811	--TIR6	
78	-127.317	-11.956	17.398	--TIR7	
79	-124.288	-14.079	17.093	--TIR7	
80	-120.840	-15.705	16.624	--TIR7	
81	-112.921	-31.151	14.217	--V1RF	
82	-118.623	-36.856	16.649	--V1RR	
83	-114.585	-40.545	16.597	--V1LR	
84	-87.181	-21.920	11.964	--TIR8	
85	-78.364	-21.704	10.716	--TIR8	
86	-77.735	-15.454	10.697	--TIR8	
87	-88.045	-15.591	12.067	--TIR8	
88	-158.699	-25.590	21.698	--EVID	
89	-181.592	-29.157	23.199	--EP1	
90	-178.751	-3.139	22.782	--EP2	
91	-19.514	1.313	2.311	--EP2	
92	-10.019	-23.841	0.691	--EP1	
93	-19.810	-0.004	2.743	--RP	

Index	North (Y)	East (X)	Elevation (Z)	Description	Edited
-------	-----------	----------	---------------	-------------	--------

End Measurement Log



VERMONT STATE POLICE

CRASH RECONSTRUCTION TEAM

Case Number;	14B101662
Incident Date	05/28/14
Location	Burton Hill Road, Barton
Drawn By:	Trooper Charles Schulze

Vehicle #3 (367)



Vehicle #1



Vehicle #2 (305)

Scene showing shell casings

VERMONT STATE POLICE

CRASH RECONSTRUCTION TEAM

Case Number;	14B101662
Incident Date	05/28/14
Location	Burton Hill Road, Barton
Drawn By:	Trooper Charles Schulze

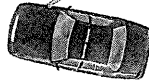
Vehicle #3 (367)



Vehicle #1



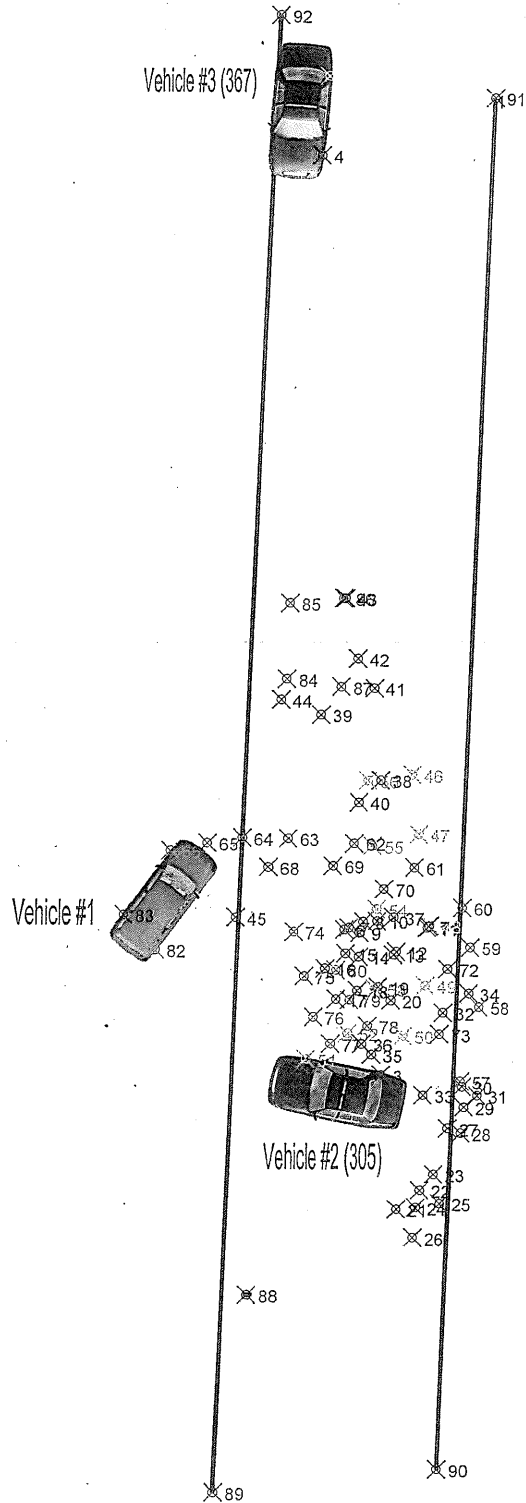
Vehicle #2 (305)



VERMONT STATE POLICE

CRASH RECONSTRUCTION TEAM

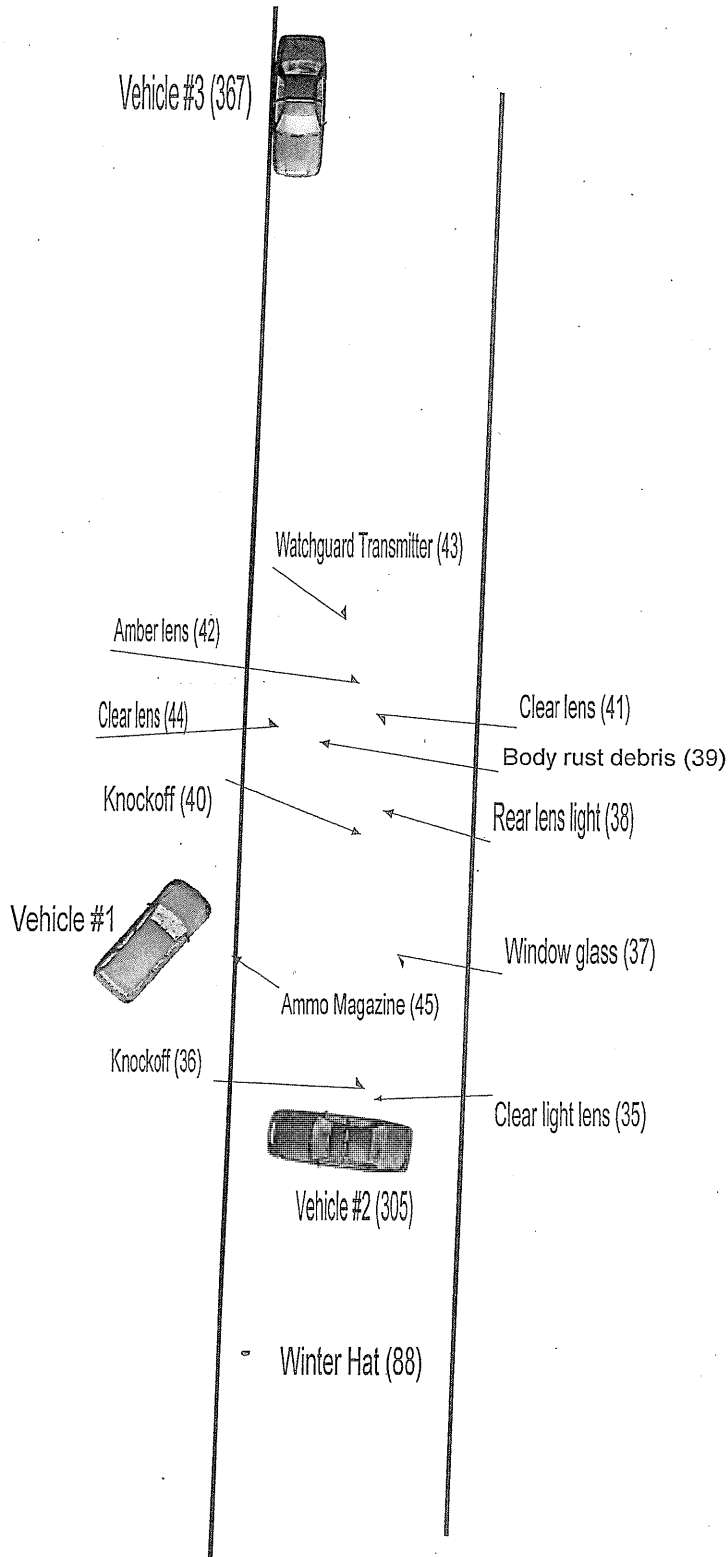
Case Number:	14B101662
Incident Date	05/28/14
Location	Burton Hill Road, Barton
Drawn By:	Trooper Charles Schulze



VERMONT STATE POLICE

CRASH RECONSTRUCTION TEAM

Case Number;	14B101662
Incident Date	05/28/14
Location	Burton Hill Road, Barton
Drawn By:	Trooper Charles Schulze

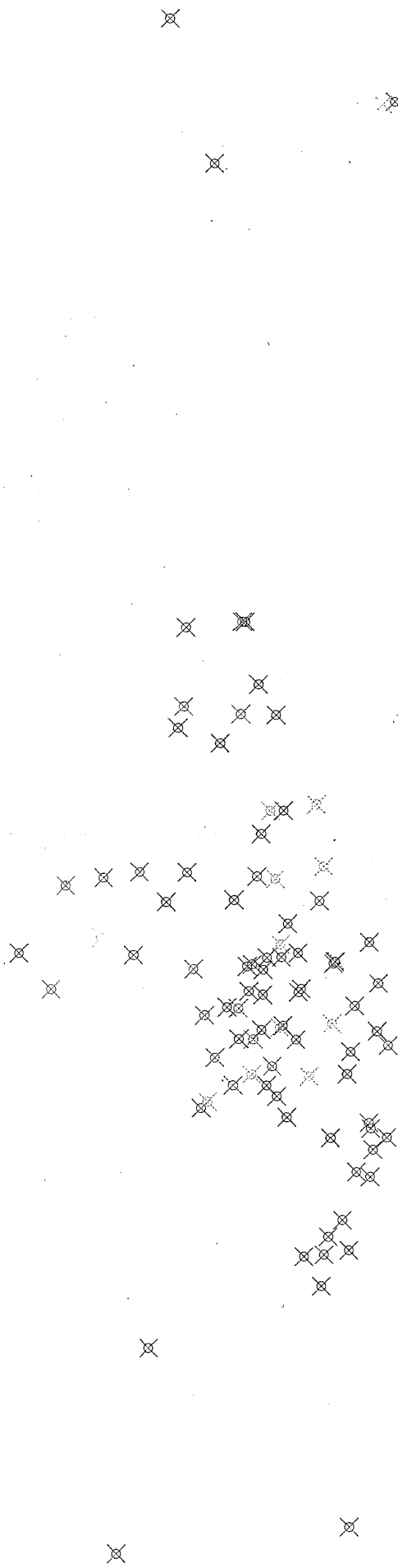


Measurement Log Report

Organization		Vermont State Police		Measured By	Corporal Owen Ballinger
File Number		14B101662		Assisted By	Trooper Charles Schulze
Incident Date		05/28/14		Date Measured	05/28/14
Location		Burton Hill Road, Barton		Weather	
Reference 1				Road	
Reference 2				Visibility	
Index	North (Y)	East (X)	Elevation (Z)	Description	Edited
1	-19.810	0.000	2.741	--RM	
2	-131.941	-19.770	19.226	--V2RF	
3	-133.003	-10.284	19.270	--V2RR	
4	-26.366	-18.823	4.586	--V3LF	
5	-17.100	-18.047	3.388	--V3LR	
6	-116.166	-14.786	15.902	--EVID	
7	-115.930	-14.258	15.881	--EVID	
8	-115.213	-12.604	15.760	--EVID	
9	-116.536	-13.010	15.938	--EVID	
10	-115.153	-10.990	15.691	--EVID	
11	-115.879	-5.126	15.641	--EVID	
12	-118.692	-8.717	16.004	--EVID	
13	-119.057	-9.016	16.058	--EVID	
14	-119.316	-13.057	16.299	--EVID	
15	-118.924	-14.603	16.301	--EVID	
16	-120.697	-16.971	16.433	--EVID	
17	-124.239	-15.658	16.829	--EVID	
	-123.234	-13.196	16.697	--EVID	
19	-122.778	-10.771	16.545	--EVID	
20	-124.341	-9.267	16.656	--EVID	
21	-148.600	-8.291	19.435	--EVID	
22	-146.378	-5.579	19.086	--EVID	
23	-144.515	-3.990	18.826	--EVID	
24	-148.385	-6.046	19.352	--EVID	
25	-147.905	-3.235	19.192	--EVID	
26	-151.892	-6.323	19.775	--EVID	
27	-139.150	-2.431	18.136	--EVID	
28	-139.700	-0.886	17.505	--EVID	
29	-136.681	-0.577	17.082	--EVID	
30	-134.295	-0.831	16.886	--EVID	
31	-135.312	0.961	16.735	--EVID	
32	-125.715	-3.140	16.615	--EVID	
33	-135.327	-5.350	17.832	--EVID	
34	-123.452	-0.184	15.375	--EVID	
35	-130.653	-11.435	17.525	--EVID	
36	-129.438	-12.583	17.420	--EVID	
37	-114.689	-9.091	15.632	--EVID	
38	-98.818	-10.814	13.824	--EVID	
39	-91.285	-17.881	12.323	--EVID	
40	-101.398	-13.319	14.163	--EVID	
41	-88.171	-11.718	11.951	--EVID	
42	-84.752	-13.688	11.650	--EVID	
43	-77.765	-15.219	10.870	--EVID	

Index	North (Y)	East (X)	Elevation (Z)	Description	Edited
45	-114.850	-27.476	15.521	--EVID	
46	-98.147	-7.124	13.270	--TIR1	
47	-105.065	-6.266	14.202	--TIR1	
48	-115.644	-4.775	15.583	--TIR1	
	-122.594	-5.254	16.545	--TIR1	
50	-128.445	-7.798	17.425	--TIR1	
51	-131.216	-19.077	18.030	--TIR2	
52	-128.190	-14.253	17.601	--TIR2	
53	-122.995	-11.113	16.813	--TIR2	
54	-113.755	-11.064	15.555	--TIR2	
55	-106.420	-11.675	14.569	--TIR2	
56	-98.841	-12.278	13.529	--TIR2	
57	-133.682	-1.037	16.853	--TIR3	
58	-125.036	1.046	15.565	--TIR3	
59	-118.124	-0.090	15.735	--TIR3	
60	-113.541	-1.096	15.187	--TIR3	
61	-108.905	-6.729	14.753	--TIR3	
62	-106.138	-13.787	14.625	--TIR3	
63	-105.646	-21.515	14.506	--TIR3	
64	-105.591	-26.836	13.532	--TIR3	
65	-106.219	-30.909	13.282	--TIR3	
66	-107.100	-35.243	15.108	--V1LF	
67	-112.898	-31.214	14.255	--V1RF	
68	-108.971	-23.769	14.922	--TIR5	
69	-108.770	-16.225	14.952	--TIR5	
70	-111.437	-10.263	15.195	--TIR5	
	-115.715	-4.932	15.607	--TIR5	
72	-120.645	-2.687	16.128	--TIR5	
73	-128.211	-3.544	17.196	--TIR5	
74	-116.460	-20.694	15.959	--TIR6	
75	-121.595	-19.439	16.698	--TIR6	
76	-126.330	-18.277	17.326	--TIR6	
77	-129.419	-16.243	17.811	--TIR6	
78	-127.317	-11.956	17.398	--TIR7	
79	-124.288	-14.079	17.093	--TIR7	
80	-120.840	-15.705	16.624	--TIR7	
81	-112.921	-31.151	14.217	--V1RF	
82	-118.623	-36.856	16.649	--V1RR	
83	-114.585	-40.545	16.597	--V1LR	
84	-87.181	-21.920	11.964	--TIR8	
85	-78.364	-21.704	10.716	--TIR8	
86	-77.735	-15.454	10.697	--TIR8	
87	-88.045	-15.591	12.067	--TIR8	
88	-158.699	-25.590	21.698	--EVID	
89	-181.592	-29.157	23.199	--EP1	
90	-178.751	-3.139	22.782	--EP2	
91	-19.514	1.313	2.311	--EP2	
92	-10.019	-23.841	0.691	--EP1	
	-19.810	-0.004	2.743	--RP	

Index	North (Y)	East (X)	Elevation (Z)	Description	Edited
-------	-----------	----------	---------------	-------------	--------



VERMONT STATE POLICE PHOTOGRAPHIC LOG

Scene: Jeep and VSP Cruisers from Barton		Case # 14B201677	Date 5/28/14	CSST Photo Log	
Frame No.	Description	Taken By	Logged By		
1	Photo Log Header	JH	AN		
2	Exterior of Jeep (VT Reg FEF 302)	JH	AN		
3	Exterior of Jeep (VT Reg FEF 302)	JH	AN		
4	Exterior of Jeep (VT Reg FEF 302)	JH	AN		
5	Exterior of Jeep (VT Reg FEF 302)	JH	AN		
6	Exterior of Jeep (VT Reg FEF 302)	JH	AN		
7	Exterior of Jeep (VT Reg FEF 302)	JH	AN		
8	Exterior of Jeep (VT Reg FEF 302)	JH	AN		
9	Windshield with Bullet Holes	JH	AN		
10	Windshield with Bullet Holes	JH	AN		
11	Hood	JH	AN		
12	Front Passenger Door	JH	AN		
13	Rear Passenger Door	JH	AN		
14	Hood – Bullet Hole with Scale - overall	JH	AN		
15	Hood – Bullet Hole with Scale – Close Up	JH	AN		
16	Windshield – Bullet hole with scale – overall	JH	AN		
17	Windshield – Bullet hole with scale – Close up	JH	AN		
18	Front passenger door bullet hole with scale - overall	JH	AN		
19	Front passenger door bullet hole with scale – close-up	JH	AN		
20	Rear passenger door bullet hole with scale - overall	JH	AN		
21	Rear passenger door bullet hole with scale – close-up	JH	AN		
22	Front Driver’s side interior	JH	AN		
23	Front Driver’s side interior	JH	AN		
24	Front Driver’s side interior	JH	AN		
25	Center console area	JH	AN		
26	Driver’s door interior with red/brown stain	JH	AN		
27	Front Driver’s side interior	JH	AN		
28	Front Driver’s side interior	JH	AN		
Initials: JH = Jeremy Hill		Initials = Name			
Initials: AN = Aimee Nolan		Initials = Name			

VERMONT STATE POLICE PHOTOGRAPHIC LOG

Scene: Jeep and VSP Cruisers Barton		Case # 14B201677	Date 5/28/14	CSST Photo Log	
Frame No.	Description	Taken By	Logged By		
29	Front Passenger Side Interior Area	JH	AN		
30	Rear Passenger Side Interior Area	JH	AN		
31	Rear Passenger Side Interior Area	JH	AN		
32	Rear Driver Side Interior	JH	AN		
33	Overall Trajectory	JH	TT		
34	Overall Trajectory	JH	TT		
35	Overall Trajectory	JH	TT		
36	Overall Trajectory	JH	TT		
37	Overall Trajectory	JH	TT		
38	Overall Trajectory	JH	TT		
39	Overall Trajectory	JH	TT		
40	Overall Trajectory	JH	TT		
41	Overall Trajectory	JH	TT		
42	Overall Trajectory	JH	TT		
43	Overall Trajectory	JH	TT		
44	Overall Trajectory	JH	TT		
45	Overall Trajectory	JH	TT		
46	Overall Trajectory	JH	TT		
47	Overall Trajectory	JH	TT		
48	Overall Trajectory	JH	TT		
49	Overall Trajectory	JH	TT		
50	Overall Trajectory	JH	TT		
51	Overall Trajectory	JH	TT		
52	Overall Trajectory	JH	TT		
53	Overall Trajectory	JH	TT		
54	Overall Trajectory	JH	TT		
55	Overall Trajectory	JH	TT		
56	Overall Trajectory	JH	TT		
Initials: JH = Jeremy Hill		Initials TT = Tara Thomas			
Initials: AN = Aimee Nolan		Initials = Name			

VERMONT STATE POLICE PHOTOGRAPHIC LOG

Scene: Jeep and VSP Cruisers - Barton		Case # 14B201677	Date 5/28/14	CSST Photo Log	
Frame No.	Description	Taken By	Logged By		
57	Overall Trajectory	JH	TT		
58	Overall Trajectory	JH	TT		
59	Overall Trajectory	JH	TT		
60	Overall Trajectory	JH	TT		
61	Overall Trajectory	JH	TT		
62	Overall Trajectory	JH	TT		
63	Overall Trajectory	JH	TT		
64	Overall Trajectory	JH	TT		
65	Overall Trajectory	JH	TT		
66	Overall Trajectory	JH	TT		
67	Overall Trajectory	JH	TT		
68	Overall Trajectory	JH	TT		
69	Suspect Clothing worn to hospital	JH	TT		
70	Suspect Clothing worn to hospital	JH	TT		
71	Suspect Clothing worn to hospital	JH	TT		
72	Suspect Clothing worn to hospital	JH	TT		
73	Suspect Clothing worn to hospital	JH	TT		
74	Suspect Clothing worn to hospital	JH	TT		
75	Suspect Clothing worn to hospital	JH	TT		
76	Bullet Fragment in Right sleeve of red sweatshirt Evidence #42	JH	TT		
77	Bullet Fragment in Right sleeve of red sweatshirt Evidence #42	JH	TT		
78	Bullet Fragment in Right sleeve of red sweatshirt Evidence #42	JH	TT		
79	Bullet on Driver Side floor – front of seat- evidence marker #43	JH	TT		
80	Bullet on Driver Side floor – front of seat- evidence marker #43	JH	TT		
81	Bullet on Driver Side floor – front of seat- evidence marker #43	JH	TT		
82	Bullet on Driver Side floor – front of seat- evidence marker #43	JH	TT		
83	Bullet on Driver Side floor – front of seat- evidence marker #43	JH	TT		
84	Bullet next to driver's side seat – evidence marker #44	JH	TT		
Initials: JH = Jeremy Hill		Initials = Name			
Initials: TT = Tara Thomas		Initials = Name			

VERMONT STATE POLICE PHOTOGRAPHIC LOG

Scene: Jeep and VSP Cruisers - Barton		Case # 14B201677	Date 5/28/14	CSST Photo Log	
Frame No.	Description	Taken By	Logged By		
85	Bullet next to driver's side seat – evidence marker #44	JH	JH		
86	Bullet next to driver's side seat – evidence marker #44	JH	JH		
87	Bullet next to driver's side seat – evidence marker #44	JH	JH		
88	Bullet next to driver's side seat – evidence marker #44	JH	JH		
89	Bullet next to driver's side seat – evidence marker #44	JH	JH		
90	Bullet next to driver's side seat – evidence marker #44	JH	JH		
91	Center Console – rock next to driver's seat	JH	JH		
92	Center Console – rock next to driver's seat	JH	JH		
93	Center Console – rock next to driver's seat	JH	JH		
94	Needle in center console	JH	JH		
95	Needle in center console	JH	JH		
96	Needle in center console	JH	JH		
97	Bullet on front passenger floor – evidence marker #45	JH	JH		
98	Bullet on front passenger floor – evidence marker #45	JH	JH		
99	Bullet on front passenger floor – evidence marker #45	JH	JH		
100	Bullet on front passenger floor – evidence marker #45	JH	JH		
101	Bullet on front passenger floor – evidence marker #45	JH	JH		
102	Bullet on front passenger floor – evidence marker #45	JH	JH		
103	Bullet on front passenger floor – evidence marker #45	JH	JH		
104	Bullet on front passenger floor – evidence marker #45	JH	JH		
105	Backpack belonging to registered owner of the jeep	JH	JH		
106	Backpack belonging to registered owner of the jeep	JH	JH		
107	Backpack belonging to registered owner of the jeep	JH	JH		
108	Backpack belonging to registered owner of the jeep	JH	JH		
109	Backpack belonging to registered owner of the jeep	JH	JH		
110	Backpack belonging to registered owner of the jeep	JH	JH		
111	Front end of Jeep	JH	JH		
112	Front end of Jeep	JH	JH		
Initials: JH = Jeremy Hill		Initials = Name			
Initials: = Name		Initials = Name			

VERMONT STATE POLICE PHOTOGRAPHIC LOG

Scene: Jeep and VSP Cruisers – Barton		Case #: 14B201677	Date 5/28/14	CSST Photo Log	
Frame No.	Description	Taken By	Logged By		
113	Rear End of Jeep	JH	JH		
114	Rear End of Jeep	JH	JH		
115	Rear End of Jeep	JH	JH		
116	Rear End of Jeep	JH	JH		
117	Rear End of Jeep	JH	JH		
118	Rear End of Jeep	JH	JH		
119	VSP Cruiser – plate # 367- exterior	JH	JH		
120	VSP Cruiser – plate # 367- exterior	JH	JH		
121	VSP Cruiser – plate # 367- exterior	JH	JH		
122	VSP Cruiser – plate # 367- exterior	JH	JH		
123	VSP Cruiser – plate # 367- exterior	JH	JH		
124	VSP Cruiser – plate # 367- exterior	JH	JH		
125	VSP Cruiser – plate # 367- exterior	JH	JH		
126	VSP Cruiser – plate # 367- exterior	JH	JH		
127	VSP Cruiser – plate # 367- exterior	JH	JH		
128	VSP Cruiser – plate # 367- exterior	JH	JH		
129	VSP Cruiser – plate # 367- exterior	JH	JH		
130	VSP Cruiser – plate # 367- exterior	JH	JH		
131	VSP Cruiser – plate # 305 - exterior	JH	JH		
132	VSP Cruiser – plate # 305 - exterior	JH	JH		
133	VSP Cruiser – plate # 305 - exterior	JH	JH		
134	VSP Cruiser – plate # 305 - exterior	JH	JH		
135	VSP Cruiser – plate # 305 - exterior	JH	JH		
136	VSP Cruiser – plate # 305 - exterior	JH	JH		
137	VSP Cruiser – plate # 305 - exterior	JH	JH		
138	VSP Cruiser – plate # 305 - exterior	JH	JH		
139	VSP Cruiser – plate # 305 - exterior	JH	JH		
140	VSP Cruiser – plate # 305 - exterior	JH	JH		
Initials: JH = Jeremy Hill		Initials = Name			
Initials: = Name		Initials = Name			

VERMONT STATE POLICE PHOTOGRAPHIC LOG

Scene: Jeep and VSP Cruisers - Barton		Case # 14B201677	Date 5/28/14	CSST Photo Log	
Frame No.	Description	Taken By	Logged By		
141	VSP Cruiser – Plate # 305 - exterior	JH	JH		
142	VSP Cruiser – Plate # 305 - exterior	JH	JH		
143	VSP Cruiser – Plate # 305 - exterior	JH	JH		
144	VSP Cruiser – Plate # 305 - exterior	JH	JH		
145	VSP Cruiser – Plate # 305 - exterior	JH	JH		
146	VSP Cruiser – Plate # 305 - exterior	JH	JH		
147	VSP Cruiser – Plate # 305 - exterior	JH	JH		
148	VSP Cruiser – Plate # 305 - exterior	JH	JH		
149	VSP Cruiser – Plate # 305 - exterior	JH	JH		
150	VSP Cruiser – Plate # 305 - exterior	JH	JH		
151	VSP Cruiser – Plate # 305 - exterior	JH	JH		
152	Keys found on front driver's seat of Jeep – Evidence marker #46	JH	JH		
153	Keys found on front driver's seat of Jeep – Evidence marker #46	JH	JH		
154	Keys found on front driver's seat of Jeep – Evidence marker #46	JH	JH		
155	Keys found on front driver's seat of Jeep – Evidence marker #46	JH	JH		
156	Keys found on front driver's seat of Jeep – Evidence marker #46	JH	JH		
157	Keys found on front passenger seat of Jeep – Evidence marker #47	JH	JH		
158	Keys found on front passenger seat of Jeep – Evidence marker #47	JH	JH		
159	Keys found on front passenger seat of Jeep – Evidence marker #47	JH	JH		
160	Keys found on front passenger seat of Jeep – Evidence marker #47	JH	JH		
161	Keys found on front passenger seat of Jeep – Evidence marker #47	JH	JH		
162	Bullet on front passenger seat of Jeep – evidence marker #48	JH	JH		
163	Bullet on front passenger seat of Jeep – evidence marker #48	JH	JH		
164	Bullet on front passenger seat of Jeep – evidence marker #48	JH	JH		
165	Bullet on front passenger seat of Jeep – evidence marker #48	JH	JH		
166	Bullet on front passenger seat of Jeep – evidence marker #48	JH	JH		
167	Bullet on front passenger seat of Jeep – evidence marker #48	JH	JH		
168	Bullet on front passenger seat of Jeep – evidence marker #48	JH	JH		
Initials: JH = Jeremy Hill		Initials = Name			
Initials: = Name		Initials = Name			

VERMONT STATE POLICE PHOTOGRAPHIC LOG

Scene: Jeep, VSP Cruisers and Van - Barton	Case # 14B201677	Date 5/28/14	CSST Photo Log
---	------------------	--------------	----------------

Frame No.	Description	Taken By	Logged By	
169	Key found in van near front driver's seat – Vt registration EFP959	JH	JH	
170	Key found in van near front driver's seat – Vt registration EFP959	JH	JH	
171	Key found in van near front driver's seat – Vt registration EFP959	JH	JH	
172	Key found in van near front driver's seat – Vt registration EFP959	JH	JH	
173	Key found in van near front driver's seat – Vt registration EFP959	JH	JH	
174				
175				
176				
177				
178				
179				
180				
181				
182				
183				
184				
185				
186				
187				
188				
189				
190				
191				
192				
193				
194				
195				
196				

Initials: JH = Jeremy Hill	Initials = Name
Initials: = Name	Initials = Name

VERMONT FORENSIC LABORATORY PHOTOGRAPHIC LOG

Card #	Case Number	14B201677	Date:	5/28/2014	Page:	1 of 1
Frame No:	Description	(Van and Safe)		Taken By:	Logged By:	Time:
1	Header			JM	AN	1140
2	Van-overall					
3	Van-overall					
4	Van-overall					
5	Van-overall					
6	Front Interior Driver's side					
7	Front Interior Driver's side					
8	Front Interior Passenger's side					
9	Front Interior Passenger's side					
10	Rear					
11	Interior-backseat					
12	RBS on steering wheel with evidence tag #1					
13	RBS on steering wheel with evidence tag #2					
14	Safe					
15	Safe					
16	Safe					
17	Safe					
18	Safe after dusting for fingerprints					
19	Safe after dusting for fingerprints					
20	Safe after dusting for fingerprints					
21	Safe after dusting for fingerprints					
22	Van after processing-exterior					
23	Van after processing-exterior					
24	Van after processing-exterior					
25	Van after processing-exterior					
26	Van driver's side interior- after processing					
27	Van driver's side interior- after processing					
28	Van driver's side interior- after processing					
29	Van passenger side interior-after processing					
30	Van passenger side interior-after processing					
31	Van passenger side interior-after processing					
32	Van interior rear-after processing					
33	END					
34						
35						
36						
37						
38						
39						
40						

Initials:

JM

Name:

John MacCallum

Initials:

AN

Name:

Aimee Nolan

VERMONT FORENSIC LABORATORY PHOTOGRAPHIC LOG

Card #	Case Number	Date:	Page:		
	14B201677	5/28/2014	1 of 2		
Frame No:	Description (Burton Hill Rd., Barton, VT)	Taken By:	Logged By:	Time:	
1	Header	JM	EM	0859	
2	General photo			0859	
3	EQ 367				
4	EQ 367				
5	Jeep, EQ, evidence markers				
6	VT registration FEF 302				
7	VT registration FEF 302				
8	VT registration FEF 302				
9	VT registration FEF 302				
10	VT registration FEF 302				
11	EQ 305			0904	
12	EQ 305				
13	EQ 305				
14	EQ 305				
15	EQ 305				
16	Evidence markers (teens,twenties)				
17	Evidentiary Item 1 casing			0910	
18	Evidentiary Item 2 casing			0911	
19	Evidentiary Item 3 casing			0911	
20	Evidentiary Item 4 casing			0911	
21	Evidentiary Item 5 casing			0912	
22	Evidentiary Item 6 casing			0912	
23	Evidentiary Item 7 casing			0912	
24	Evidentiary Item 8 casing			0912	
25	Evidentiary Item 9 casing			0913	
26	Evidentiary Item 10 casing			0913	
27	Evidentiary Item 11 casing			0913	
28	Evidentiary Item 12 casing			0913	
29	Evidentiary Item 13 casing			0913	
30	Evidentiary Item 14 casing			0913	
31	Evidentiary Item 15 casing			0915	
32	Evidentiary Item 16 casing			0915	
33	Evidentiary Item 17 casing			0915	
34	Evidentiary Item 18 casing			0916	
35	Evidentiary Item 19 casing			0916	
36	Evidentiary Item 20 casing			0916	
37	Evidentiary Item 21 casing			0916	
38	Evidentiary Item 22 casing			0917	
39	Evidentiary Item 23 casing			0917	
40	Evidentiary Item 24 casing			0917	

Initials: JM **Name:** John MacCallum

Initials: EM **Name:** Edward Meslin



CRIME SCENE SEARCH TEAM – MEMBER’S REPORT

CSST Member: Det. Lieutenant Lance Burnham

Case Number: 14B201677

Location: Burton Hill Road, Barton, VT

Narrative:

I am a full time police officer, employed by the Vermont State Police. I have been assigned to the Bureau of Criminal Investigation since May 2007. I am currently the Crime Scene Search Team Commander for the Vermont State Police. I have completed the Basic Crime Scene Investigations Course, along with the Harvard Associates in Police Sciences Homicide School. I have been trained in Child and Infant Homicide Investigations to include Shaken Baby Syndrome Training. I am an instructor in Sudden Unexplained Infant Death Investigations as well as Crime Scene Processing. I have received advanced Training in Blood Spatter Analysis through Bevel, Gardner, and associates and the Henry Lee Institute. I have also completed a certification course through the Force Science Institute regarding Officer Involved Shootings. I have been the investigating or assisting Detective on approximately 100 deaths and homicides.

On May 28, 2014, I was the Northern Zone Duty Officer for the Vermont State Police. I received a call from the St. Johnsbury Barracks Dispatcher advising Troopers were in an active chase with a vehicle in the Town of Barton. While on the phone with dispatch, I heard a dispatcher advise that shots had been fired and rescue was requested at the scene. After a short period of time dispatch confirmed that Troopers involved in the chase were safe and Troopers had fired their weapons at a lone occupant of the chased vehicle. Dispatch confirmed that a male had been shot and was being treated at the scene by Troopers and rescue was responding. Sgt Denis Girouard and Trooper Seth Loomis were the reported Troopers involved in the shooting.

I made immediate contact with the State Duty Officer, Major Sheets and updated him on the situation. I then immediately responded to the St. Johnsbury barracks to assist with the investigation. I arrived at the barracks at approximately 0355 hours and attended a briefing regarding the incident.

At the conclusion of the case briefing I activated the following CSST members to assist in processing the scene while I stayed as the Northern Zone Duty Officer.

- Detective Sgt Ed Meslin
- Detective Sgt Tara Thomas
- Det Sgt Aimee Nolan
- Det Sgt Jeremy Hill
- Detective Trooper John MacCallum

At the briefing I learned the following which led to the police chase. I learned that Troopers had responded to a reported vehicle off the roadway. As Troopers were investigating this incident, Sgt Girouard overheard a reported vehicle theft in the immediate area. Sgt Girouard and Tpr. Loomis located the reported stolen vehicle which led to a police chase. At the conclusion of the chase both Sgt Girouard and Tpr. Loomis fired their weapons at the operator of the vehicle.

Once CSST members were activated I assigned Det Sgt Meslin as the team leader for processing the scene where the Troopers vehicles and the suspect vehicle were located on Burton Hill Road in the Town of Barton. I requested at the conclusion of that scene, team members respond back to the St. Johnsbury barracks where they would process the vehicles involved in the chase. I assigned Det Sgt. Jeremy Hill as the team leader for processing these vehicles.

Once the all case briefings were completed and the CSST members started processing the scene and responded to Burton Hill Road for any assistance if needed. Sgt Meslin was actively leading the team in the processing and I stood by for assistance. Once the scene was processed I followed a tow truck which was transporting the police cruisers and the suspect vehicle back to the St Johnsbury Barracks.

At that time CSST members were preparing to process the vehicles. Det Sgt Hill arrived on scene and acted as the Team Leader during this processing. I cleared from the barracks at approximately 1230 hours.

See Officer reports for detail regarding scene processing and digital videography and photos.

This concluded my involvement with the scene. See Investigative report for further details.

Detective Lieutenant Lance Burnham
Vermont State Police



CRIME SCENE SEARCH TEAM – MEMBER’S REPORT

CSST Member: Detective Sergeant Jeremy Hill

Case Number: 14B201677

Location: Barton

Narrative:

I was contacted by Lt. Lance Burnham, Crime Scene Search Team Commander, on 5/28/14 at approximately 0430 hours and advised of an officer involved shooting that occurred in Barton. Lt. Burnham asked that I respond to the St. Johnsbury barracks and assist with processing the scene. I advised Lt. Burnham I had a prior commitment in the morning but would respond later in the morning. Lt. Burnham advised that would be fine.

I responded to the state police barracks in St. Johnsbury and met with Lt. Burnham at approximately 1045 hours. Lt. Burnham advised the crime scene search team (CSST) had finished processing the scene in Barton and he asked that I assist with processing some of the vehicles involved in the incident. Lt. Burnham advised the vehicles had been towed back to the state police barracks for processing. I was advised written consent had been obtained to search and process the vehicles and a safe involved in the incident.

I assisted with first photographing the van (Vermont registration *redacted* . We began processing the van at approximately 1140 hours at the St. Johnsbury State Police Barracks.

At approximately 1223 hours I photographed the safe located in the garage of the state police barracks. I had been advised that the safe had been found inside the van with VT registratio *redacted* .

In addition to photographing the safe I also attempted to “dust” the safe for fingerprints. I was unable to locate any identifiable fingerprints. I had been provided with the number code combination for the safe. I attempted to open the safe but was not able to.

I then assisted with photographing the jeep (VT registration FEF302). We began processing the jeep at approximately 1244 hours.

I also photographed the damage that had been done to the two state police cruisers. I only photographed the exterior of the cruiser as no damage had occurred to the interior.

It should be noted that the photographs for the Jeep (VT reg FEF302) and the two state police cruisers had been done on one photo log while the photographs taken of the van (VT reg *redacted* and the safe had been logged on a separate photo log. There was one exception to this. Once we had finished processing the vehicles I advised Lt. Kraig LaPorte review the evidence recovered from the jeep and the van. While speaking with Lt. LaPorte he asked that we (CSST) take all keys found in the jeep and the van as evidence. One set of keys found on the front floor of the van were taken as evidence and the photo documentation of where the keys were located occurred on the photo log for the Jeep and the state police cruisers.

This ended my involvement.



CRIME SCENE SEARCH TEAM – MEMBER’S REPORT

CSST Member: Det. Sgt. Tara Thomas

Case Number: 14B201677 (Barton Officer Involved Shooting)

Location: Barton & the St. Johnsbury Barracks

Narrative: On 5/28/14 I was activated by Det. Lt. Lance Burnham for a Crime Scene Search Team detail involving an Officer Involved Shooting which occurred in the Town of Barton. The incident occurred on Burton Hill Road in Barton following a high speed chase.

I responded to the scene and assisted in processing the scene with Det. Sgt. Ed Meslin, Det. Sgt. Aimee Nolan and Det. Tpr. John MacCallum. My role at the scene was to package all evidence retrieved and properly document such on an Evidence Recovered Form. Once the scene was processed and secured, we processed two vehicles at the St. Johnsbury Barracks, a van in which the suspect stole earlier in the evening, and the Jeep that was involved in the shooting. I again processed and packaged the evidence retrieved from these searches.

This concluded my involvement in this matter.



CRIME SCENE SEARCH TEAM – MEMBER’S REPORT

CSST Member: Aimee Nolan
Case Number: 14B201677
Location: Burton Hill Road, Barton, Vermont

Narrative:

On Wednesday, May 28, 2014 at approximately 0430 hours I was activated as a member of the Vermont State Police Crime Scene Search Team. I traveled to the scene as directed and arrived at approximately 0630 hours.

I met with members of the Vermont State Police Crash Reconstruction Team on scene and assisted with marking evidence. As other members of the CSST arrived, I met with them and assisted with videography of the scene, collection of evidence, photography log, and processing vehicles involved in the incident.

This ends my involvement in this investigation.



CRIME SCENE SEARCH TEAM – MEMBER’S REPORT

CSST Member: Detective Sergeant Edward Meslin

Case Number: 14B201677

Location: 2545 Burton Hill Road Barton, Vermont

Narrative: On May 28, 2014 at approximately 0430hrs I was contacted by Detective Lieutenant Lance Burnham regarding an officer involved shooting that had taken place earlier in the night. I was informed that 2 troopers shot an individual after a pursuit involving motor vehicles in the town of Barton. Lieutenant Burnham requested that I report to Saint Johnsbury barracks.

While traveling to Saint Johnsbury barracks Lieutenant Burnham called and requested I go straight to the scene and obtain photographs as the weather was cloudy and there was a threat of rain. I was advised the incident scene was located at 2545 Burton Hill Road in the town of Barton.

I arrived on scene at 0623hrs. I observed the scene to be a dirt/gravel road. The road was closed off on either side of the scene. I obtained my camera and began taking photographs, starting from the exterior and working my way into the scene. I observed 2 VSP cruisers in the roadway that were damaged and a civilian vehicle that was off the roadway that was also damaged and appeared to have numerous bullet holes in it. I obtained a number of photographs.

By approximately 0700hrs others members of our CSST arrived. Sergeant Nolan was assigned video. Sergeant Thomas was assigned to evidence. Trooper MacCallum was assigned photographs and I maintained the photo log. Trooper Owen Ballinger was also on scene and had set up their Total Station.

After video and general photographs were obtained Trooper Ballinger captured the scene with the Total Station.

Our team then collected what evidence was identified which consisted of mainly bullet casings. Both cruisers were removed by flatbed. The suspect’s vehicle was also removed by flatbed and brought to Saint Johnsbury barracks to be processed there.

Our team left the scene at 1005hrs.

I then traveled to Saint Johnsbury barracks. Sergeant Jeremy Hill arrived at this time and oversaw the processing of the 2 vehicles (the suspect's vehicle and a van from another part of this investigation). I burned 2 copies of the photographs I obtained when I first arrived and turned them over to the case officer.

This ends my involvement.



CRIME SCENE SEARCH TEAM – MEMBER’S REPORT

CSST Member: Detective Trooper John MacCallum

Case Number: 14B201677

Location: Burton Hill Road, Barton, VT

Narrative:

1. On 5/28/14, I was contacted by Detective Lieutenant Lance Burnham and activated as a member of the Crime Scene Search Team (CSST) to assist with an officer involved shooting.
2. I responded to the Vermont State Police (VSP) Williston Barracks to get the CSST truck and from there, I went to the scene, located on Burton Hill Road in Barton, VT, where I met other CSST members.
3. My role at this scene was to take photographs. The photographic log was maintained by Detective Sergeant Edward Meslin. Upon finishing the Burton Hill Road scene, we went to the VSP Saint Johnsbury Barracks. Once at the barracks, I photographed and processed a van, as well as photographed a safe that were associated to the investigation, while Detective Sergeant Aimee Nolan maintained the photographic log. I also assisted in processing the vehicle from the Burton Hill Road incident, which had been brought to the barracks. This concluded my involvement with this investigation.

Detective Trooper MacCallum

Date: 6/2/14



